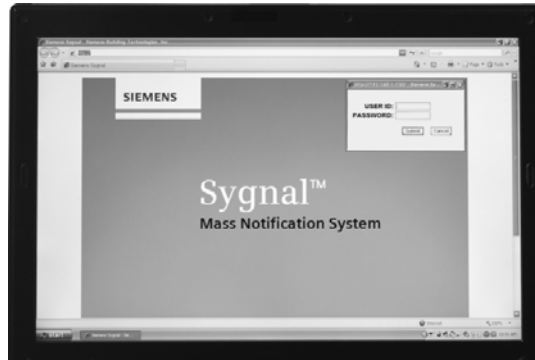


# Sygnal™ Mass Notification System

## *Inside, Outside and At-Your-Side Messaging Communications*



---

### **System Overview**

---

The Sygnal premise-based mass notification system is comprehensive, network-based communication system that utilizes various forms of technology to immediately notify recipients of current emergent situations and the subsequent actions that need to be taken in order to provide the highest levels of safety and security for their environment.

Sygnal software is the hub of this premise-based system. The software resides on the dedicated Sygnal server that can reside on a customer's current LAN infrastructure or a dedicated network. All access to the server is executed through any hardwired or wireless access point of the LAN the Sygnal server resides. Local computers, phones, and wireless mobility devices can be used to access the Sygnal server, allowing a customer to initiate communications from the most remote locations.

Sygnal software is a Linux-based application that simply allows the user to send live or pre-defined (canned) messages to various forms of visual or audible mass-communication appliances, as well as personal communication devices.

Sygnal software allows the user to define a virtually unlimited number of attributes for any type of potential emergency. Attributes include – but are not limited to: pre-defined text messages, pre-recorded voice messages, pre-defined recipient groups, and imported maps, which allow the user easy visualization of their communication appliance / device resources. Sygnal can execute live-voice messaging, via a local phone networked with the Sygnal server – either through PBX or a network IP phone.

Standard, mass-communication appliances include – but are not limited to: scrolling LED signs, indoor / outdoor speakers, and emergency-notification strobes. Personal communication devices include – but are not limited to: PC Alert for personal computers, emails, PBX phones, IP phones, and personal-mobility devices, such as cell phones (voice and text) and RIM devices.

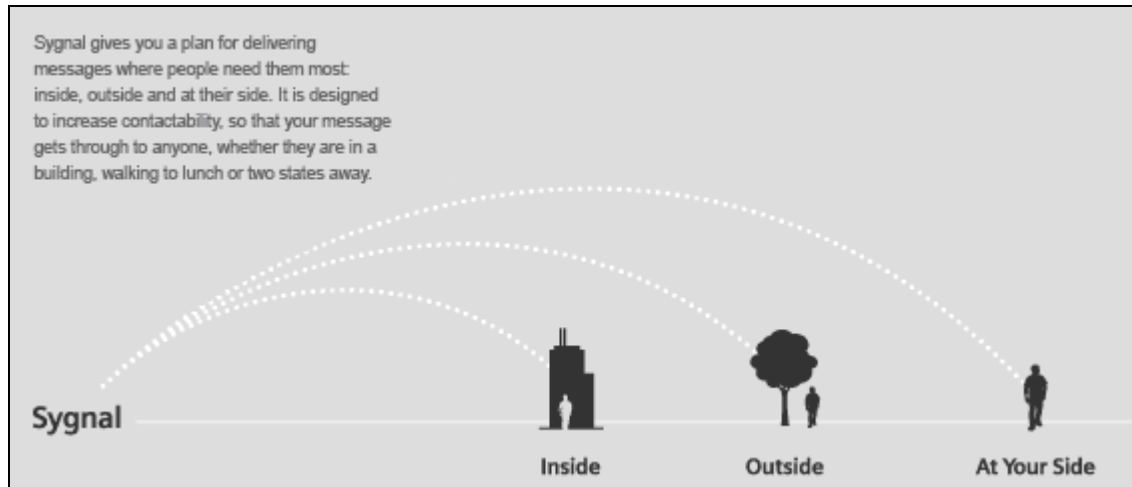
The effectiveness of mass-notification system increases exponentially as a customer employs the technique of 'layering.' Layering is the ability to communicate with the intended recipients through multiple means simultaneously. The more means in which the Sygnal administrator can communicate; the higher the probability each recipient has successfully received the message.

**Sygnal™ 7000**

## System Overview – (continued)

Sygnal is a highly adaptable system that can utilize existing LAN infrastructure, as well as existing voice systems, such as fire-alarm voice evacuation systems, other emergency voice-evacuation systems or voice-paging systems.

Sygnal is based upon the methodology that an effective emergency communication system needs to function at three levels simultaneously in order to effectively protect with the customer's people. It must function for 'Inside' building applications, 'Outside' building applications, and using personal communication devices 'At Your Side.'



<u>Inside</u>	<u>Outside</u>	<u>At Your Side</u>
PA / Intercom	Loudspeakers	PDAs
Video Screens		Cell Phones
Personal Computers		SMS / IM
Fire Voice System		Email
Telephones Broadcast		Handheld Radios
Horns		
LED / LCD Displays		
Strobes		

### Inside

Inside your buildings, Sygnal mass notification improves your ability to establish contact. With a Sygnal system, people in every area of the facility or campus can be reached in times of emergency. Electronic signage, desktop PCs, telephones and paging systems communicate emergency messages, allowing organizations to disseminate critical information to thousands of personnel – regardless of location – within seconds.

#### – Phone System Notification:

This component provides coverage through your existing IP Phones, PBX system and phone pager system with text-to-voice capability.

#### – PC Alert:

This product includes a software program that provides instant remote delivery of alert messages to computers running Windows® 95, 98, 2000, NT, XP, and VISTA as well as the PC Alert client. When a message is sent to a personal computer with the client, a new window is automatically opened and an emergency message will scroll within that window. This window cannot be closed until the emergency message is terminated by the sender. Some benefits of the feature are:

- Reach people at their PCs quickly and easily; just type your message and click "Send"
- Deliver messages from any PC to any other PC, with the proper authorization
- Ability for the sender to keep the message scrolling, until it has been decided by the user to remove the particular posted message
- Reach individuals, predetermined groups or everyone on your network with the same alert or emergency message

## **System Overview – (continued)**

---

– Fire Alarm Panels:

Make the most of your current fire-alarm, voice-evacuation infrastructure by integrating Sygnal mass notification with an existing fire-alarm, voice-evacuation system. These networks have built-in survivability, as well as battery backup, which means they are 'always on' and, therefore, highly reliable. Constant circuit supervision can identify problems with horns, speakers, signs and other devices, helping to keep your notification system operating at peak efficiency.

– LED Textual Displays:

Single-line displays are available in LED format, and have character sets with variable font heights:

- Displays are available in tri-color (a combination of red, green and yellow)
- Signs can be programmed to create a sequence of display effects and messages by using software provided

The robust functionality of these components allows you to interconnect multiple locations and send a single announcement simultaneously to multiple rooms, floors, and buildings.

– Text-to-Speech Functionality:

Type a text-formatted message, and the Sygnal system's software translates the text into a 'near-human' voice message that is broadcast over the public-address system.

– Floor Plan User Interface:

Import floor plans and building layout into the software. An intuitive, customizable graphical replication of your hallways, foyers, etc. is easily created for visual selection of communication capabilities.

### **Outside**

Sygnal mass notification ensures people on every square foot of an educational or business campus can be reached in times of emergency. Sygnal provides an interface to most outdoor, emergency-voice-warning systems.

– Giant Voice:

In the event of a natural disaster or terrorist attack, high-powered speaker arrays can be an indispensable tool for warning groups of people. These innovative arrays are capable of producing high-intensity warning signals and carrying voice messages over a wide area.

### **At Your Side**

At Your Side mass notification harnesses the portable power of personal devices to ensure that people spread throughout indoor and outdoor spaces will be reached in times of emergency.

– Benefits:

Pagers, cell phones, PDAs and smart phones become emergency notification devices, allowing organizations to disseminate voice, pager and text alerts to thousands of personnel, regardless of location, within seconds.

– Mobile Phone and PDA Notification:

Large volumes of alerts, messages and information to land-line phones, cell phones and PDAs can be sent. After a message is sent, the system provides an optional electronic receipt acknowledgement that the message was received. Sygnal mass notification also gives authorized users the ability to activate system components, via their personal devices:

- Convenient – Notifications are delivered to wherever subscribers are located at the time of the announcement
- Easy to use – Works via passive participation; subscribers receive notifications automatically
- Fast – Important notifications are delivered within seconds of being sent
- Accurate – Subscribers receive real-time news, which means they can receive steady, accurate updates
- Effective – Subscribers receive detailed information so they know exactly what is going on, and can reference that data 'on the go'

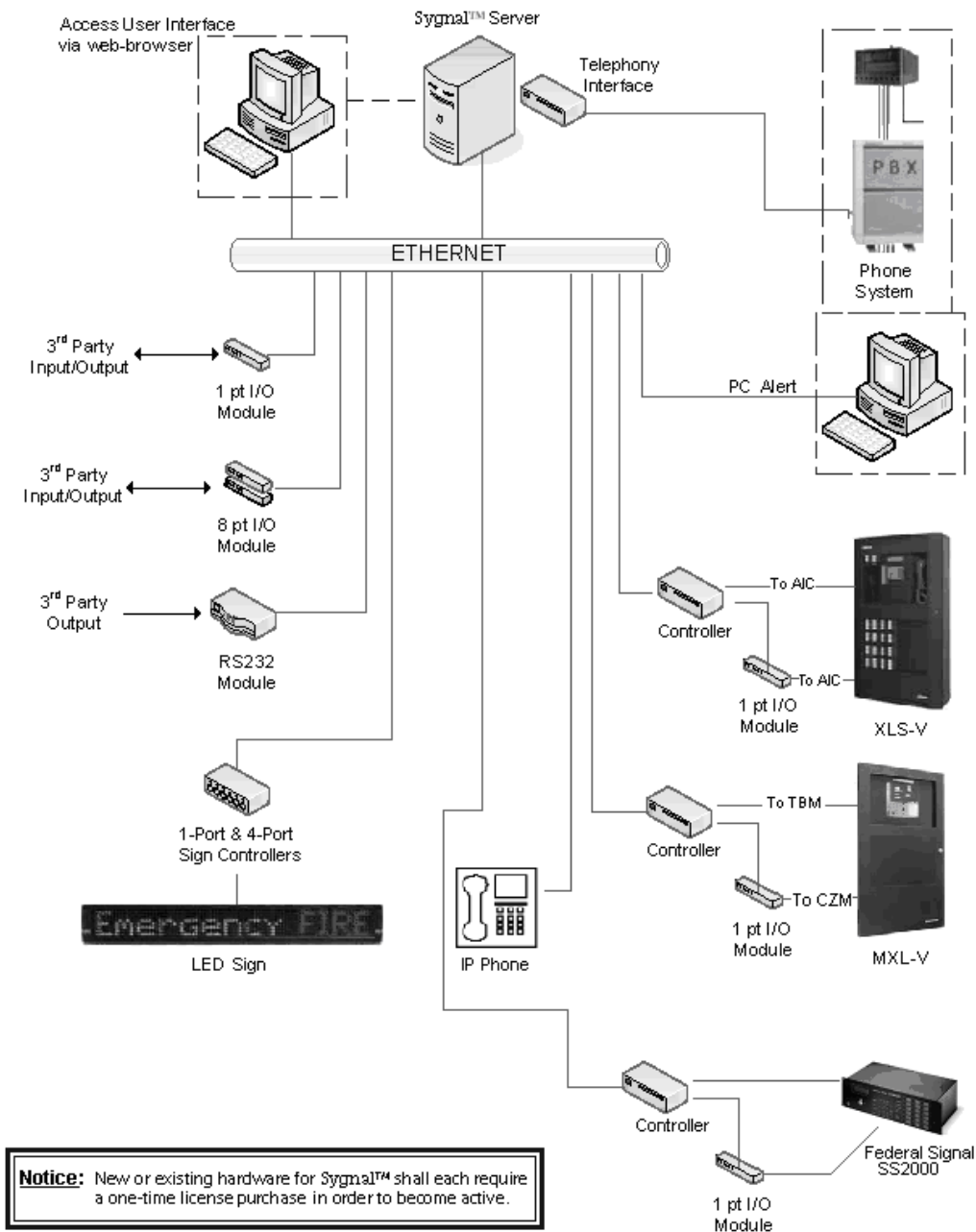
## System Overview – (continued)

– **Pager Notification:**

You can reach numeric pagers with customized or pre-determined text messages with the click of a mouse.

The Sygnal mass notification system achieves maximum connectivity, via a seamless, input-to-output activity flow, which funnels through a powerful, dedicated server that integrates Sygnal with your customer's existing infrastructure.

## System Diagram



**Notice:** This marketing catalog sheet is not intended to be used for system design or installation purposes. For the most up-to-date information, refer to each product's installation instructions.